

Applications innovantes

Systeme de géolocalisation de hautes précisions



Joe WILKE
Ericsson

The value of 5G in manufacturing



Coverage

Latency

Mobility

Security

Ease of use

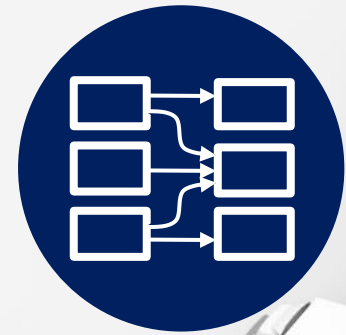
Throughput

LAN integration

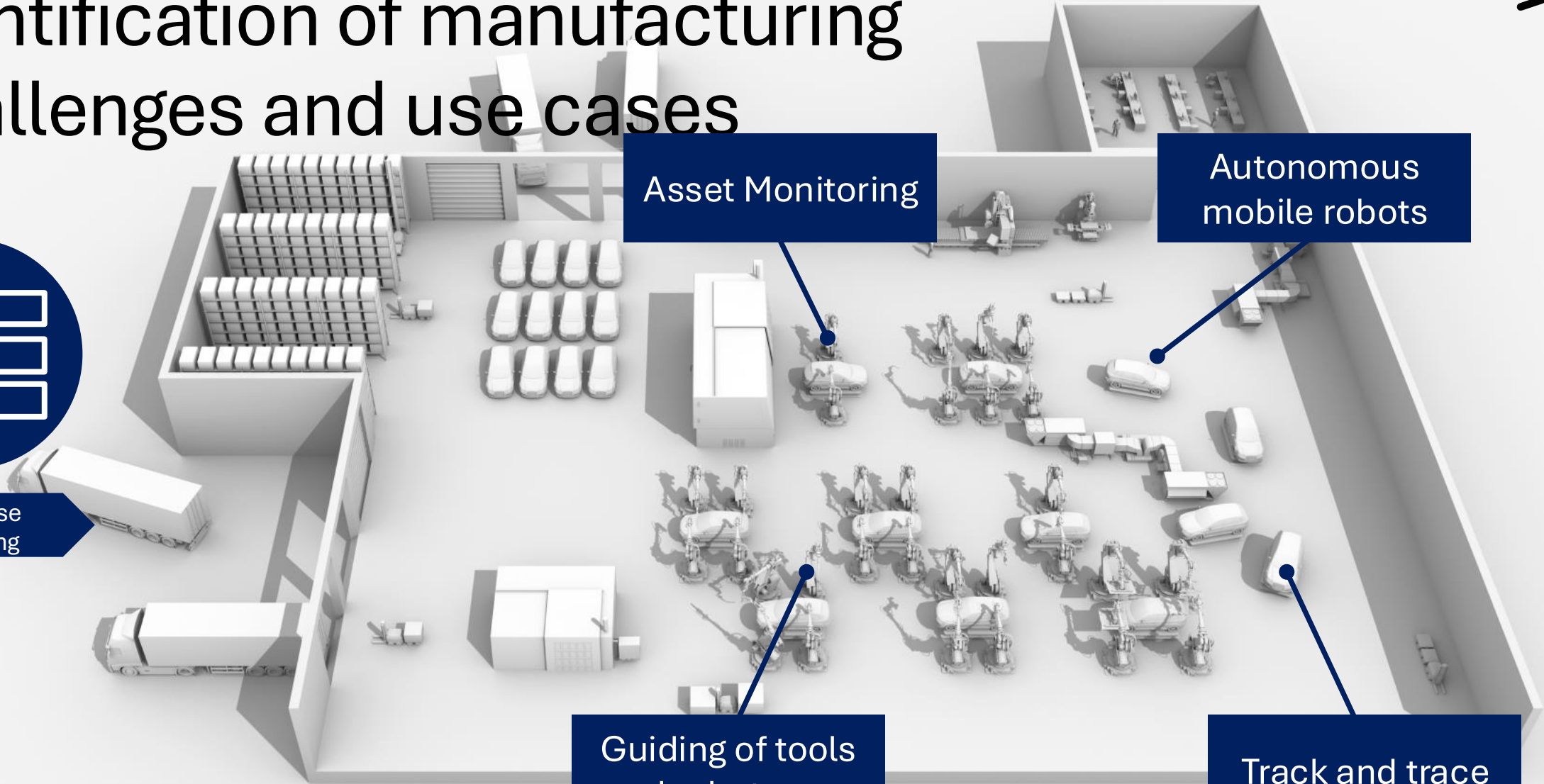
Positioning

Positioning as an additional return of invest stream solving a large set of manufacturer's challenges

Identification of manufacturing challenges and use cases



Use Case Matching



Asset Monitoring

Autonomous mobile robots

Guiding of tools and robot arms

Track and trace

Positioning with 5G



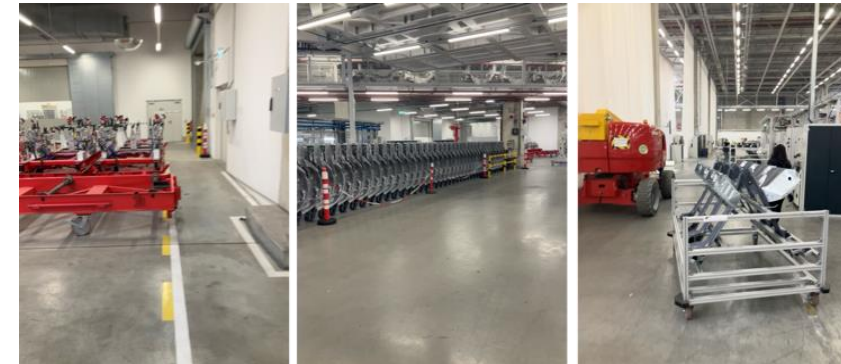
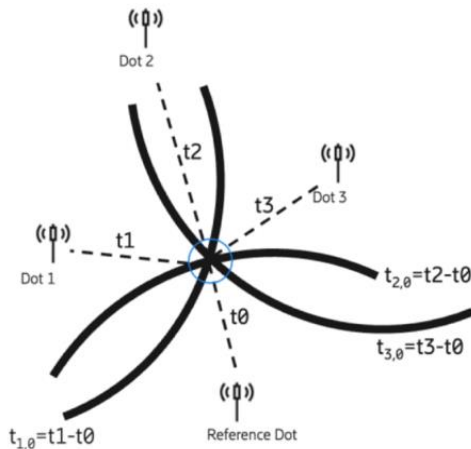
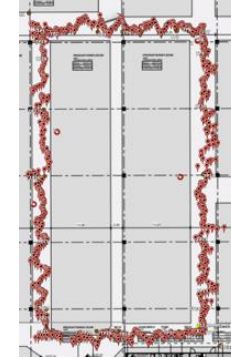
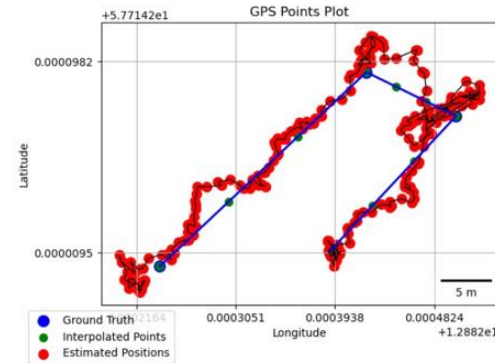
Timestamp	OfLocation	Estimatee	SUPI	LAT	LON	semiMinor	semiMajor	orientationMajor	Confidence
2024-12-19T15:24:55+0000	,imsi-262980000005107,52.5364719655,13.260108045,0.8424019813537598,1.0762799978256226,1,95								
2024-12-19T15:24:57+0000	,imsi-262980000005107,52.5364693723,13.2601033679,1.323140025138855,1.4291900396347047,170,95								
2024-12-19T15:25:34+0000	,imsi-262980000005107,52.5364728901,13.2601066892,0.7924540042877197,1.0070500373840333,176,95								
2024-12-19T15:25:37+0000	,imsi-262980000005107,52.5364669286,13.2601019272,1.0741699934005738,1.1930099725723267,165,95								
2024-12-19T15:25:40+0000	,imsi-262980000005107,52.5364677039,13.2600962292,1.0394799709320069,1.1464099884033204,158,95								
2024-12-19T15:25:43+0000	,imsi-262980000005107,52.5364699622,13.2601027691,1.3253799676895142,1.4328999519348145,171,95								
2024-12-19T15:25:45+0000	,imsi-262980000005107,52.5364674552,13.2600980855,1.095810055732727,1.2064900398254395,168,95								
2024-12-19T15:25:48+0000	,imsi-262980000005107,52.5364691089,13.2601019551,1.2079600095748902,1.3082000017166138,168,95								
2024-12-19T15:25:51+0000	,imsi-262980000005107,52.536470116,13.2601039039,1.3691699504852296,1.4696400165557862,173,95								
2024-12-19T15:25:53+0000	,imsi-262980000005107,52.5364704731,13.2601035493,1.1909199953079224,1.3176900148391724,173,95								
2024-12-19T15:25:56+0000	,imsi-262980000005107,52.536470797,13.2601003157,1.4818899631500245,1.6052500009536744,173,95								
2024-12-19T15:25:59+0000	,imsi-262980000005107,52.5364670171,13.2600981424,1.367609977722168,1.4533100128173829,161,95								
2024-12-19T15:26:02+0000	,imsi-262980000005107,52.5364734051,13.2601052154,1.0583699941635132,1.2217199802398682,176,95								
2024-12-19T15:26:55+0000	,imsi-262980000005107,52.5364732331,13.2601049434,1.1221799850463868,1.2934900522232056,177,95								
2024-12-19T15:26:58+0000	,imsi-262980000005107,52.5364733859,13.2601060082,0.8215439915657044,1.0862200260162354,174,95								
2024-12-19T15:27:18+0000	,imsi-262980000005107,52.5364735937,13.2601040452,1.2273999452590943,1.3873100280761719,176,95								
2024-12-19T15:27:21+0000	,imsi-262980000005107,52.5364723413,13.2601033152,0.7752060294151306,0.9755889773368836,173,95								
2024-12-19T15:27:41+0000	,imsi-262980000005107,52.5364679604,13.2600974314,1.3564800024032593,1.4497100114822388,160,95								
2024-12-19T15:27:43+0000	,imsi-262980000005107,52.5364679906,13.2601038133,1.409440040588379,1.500100016593933,161,95								
2024-12-19T15:28:20+0000	,imsi-262980000005107,52.5364671647,13.2600976445,1.2112499475479127,1.3170299530029297,165,95								



Revolution – Precise Indoor Positioning

An Ericsson Enterprise 5G feature that revolutionizes manufacturing customer ROI

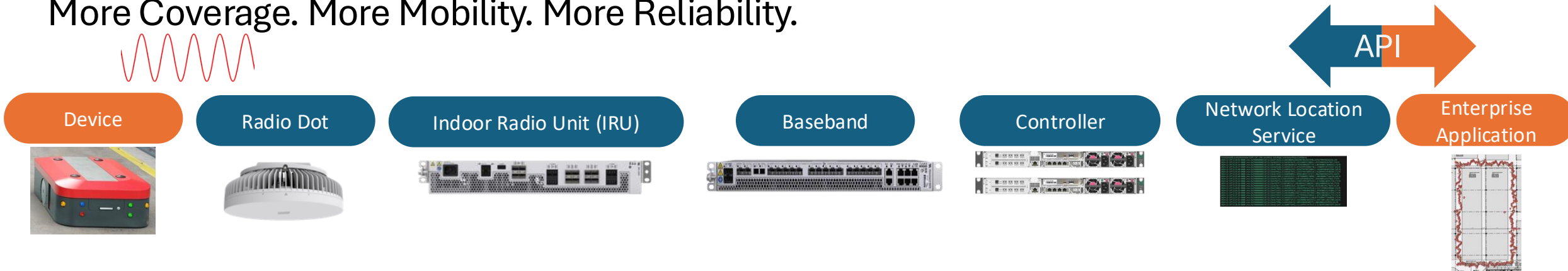
- Enables precise location tracking for devices attached to the Ericsson Private 5G network
- Device-agnostic—works for all devices
- It's based on multi-lateration positioning in which the Radio Dot System measures the relative time of arrival of 5G uplink signals to multiple radio dots



Successfully tested in harsh RF environments with industrial customers; location precision of ~1m

Network Locations for Positioning

More Coverage. More Mobility. More Reliability.



Accuracy is dependent on:

- Bandwidth (100 MHz en-bloc is fine),
- Device Speed
- Number of dots receiving signals form the device (3 as a minimum)
- Accurate Position of radio dot in the Network Location Service database